

## 19" Power Supply Rack Mount

# 19RM Series



19RM-001



19RM-003

***Thank you for purchasing 19RM Series(001/003)***

The 19RM(001/003) is a multi-mounting rack that offers the flexibility to mount up to eight(8) Ophit's 4K/8K optical extender products.

**[www.ophit.com](http://www.ophit.com)**

### Product Description

OPHIT 19RM(001/003) series is a multi-mounting rack that offers the flexibility to mount up to eight(8) Ophit's 4K/8K optical extender products as below

19RM-001

\*FTDS : 4K DisplayPort 1.2 optical extender

\*FTHS : 4K HDMI 2.0 optical extender

19RM-003

\*OMB-DP : 4K/8K DisplayPort 1.2a/1.4 optical extender

\*OMB-HM : 4K/8K HDMI 2.1 optical extender

Each fiber optical extender can be powered from 19RM series and 19RM series uses 100-240VAC, 50-60Hz of dual input power with load-sharing and redundant back-up.

19RM series adopts two(2) LEDs in the front panel for power supply, these LEDs are as indicator whether to working internal SMPS.

**CONNECTION:** All inputs and outputs(except for the power input)are Electrical energy source class 1(ES1) as defined in IEC/UL 62368-1 edition 2.

### Check your package

Check the package and make sure you have everything:

Contents

(1) 19RM Series(19RM-001 or 19RM-003)

(2) Optic Fiber Cable : OM3 1Ch SC 220mm – 8EA(001) or  
Optic Fiber Cable : OM3 1Ch MPO 220mm –8EA(003)

(3) Power connection cable for Fiber Optic Extender-8EA

(4) Power cord – 2EA

(5) 3x5 Washer Nickel Screw-8EA

(6) User's Guide

If any of these items are missing in your package, contact OPHIT or your supplier for support.

**NOTE:** Package content may differ if you have placed a special order or placed order from anywhere other than OPHIT CO., LTD. OPHIT CO., LTD. reserves the right to make changes without further notice to a product described herein to improve reliability, design, packaging or function.

## Installation

Installation Steps: 19RM-001/-003 both are same way.

1. Remove the "Foot rubber" of the 4K(8K) Fiber Optic Extender products.



FTDS/FTHS

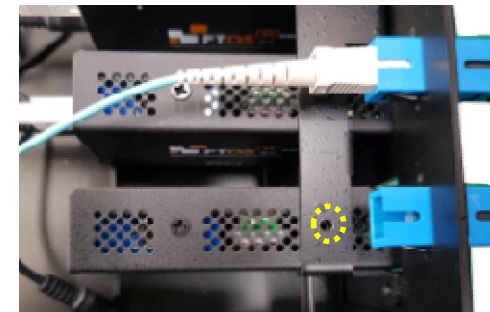


OMB-DP/HM

2. Disassemble the screw of product side.



3. Install the 4K(8K) optical extender into the 19RM-Series.
4. Match hole of the 19RM-Series bracket with hole of the 4K(8K) optical extender

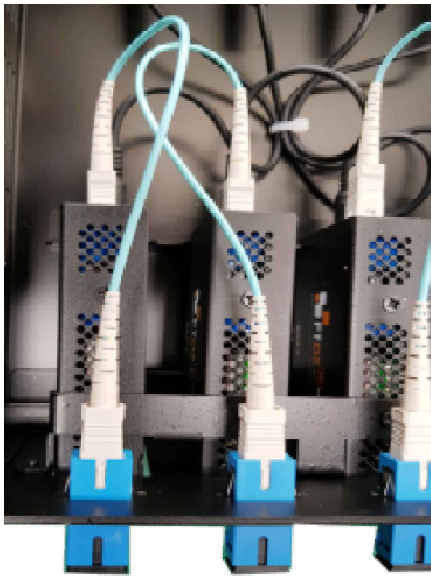


5. Tighten with the provided screw securely.



## Installation

6. Connected the fiber optic cable, DC power jack.



< 19RM-001 SC Type >



< 19RM-003 MPO/MTP Type >

7. Connect two(2) AC plugs to inlet of 19RM Series.

\* 19RM Series has load shared dual power supplies to run the system stable without any disruption. So it is highly recommended to connect separate power source to AC IN1 and AC IN2 to avoid power failure problem.

8. Turn on PS1 and PS2.



## Installation

9. Check the LED of Powers change to Blue.



**NOTE:** Don't arbitrarily disassemble, separate parts or modify the product. It may be cause mechanical and functional trouble.

## Note

\*\* Please select a product based on your installation configuration.

**4K**



HDMI type(FTHS)



DisplayPort type(FTDS)

**8K**



HDMI type(OMB-HM)



DisplayPort type(OMB-DP)

# Warranty

We, OPHIT hereby warrant the final purchase of our product as follows.  
In the case of troubles on our products, please contact the shop purchased.

## **One year limited warranty**

Our customers have right to be served with free of charge when there is trouble in this product during 1 (one) year from the day purchased.

## **Out of warranty services**

When you request services (in the case of non manufacturing defects but the troubles by misuse), may served with charge as follows.

- Defects of products caused by accident, disaster.
- Damages of products caused by the customer's carelessness or mistaken application.
- Damages of products caused by the application of the parts or products not supplied or sold by our company.
- Damages of products and related defects caused by not our staff or the men or group not nominated by us for services.

The interchanged parts and products for maintenance services shall be replaced as new parts and products operating normally, and the inter-changed parts and products shall be subjected to our company.





# RMA Request Form

RMA No.:

Customer Name:		Return Date:	
Company Name:		Phone:	
Model Name:		E-Mail:	
Serial No:		Place of Purchase:	
Address: (For RMA Return)			
RMA details: (Please describe RMA status, application used and failure symptom)			



---

## Technical and Sales Support

### KOREA HQ



#501 (Sun technovill), 77, Deogyong-daero 1471beon-gil, Yeongtong-gu, Suwon-si,  
Gyeonggi-do, 16681, Republic of Korea

Tel: + 82 (0)31 8067 5542

Fax: + 82 (0)31 8067 5548

E-Mail

jhchoi35@ophit.com

## Regional Office

---

### USA

#### Foreseeson Custom Display

2210E, Winston Road Anaheim,  
CA 92806 USA

TEL: +1-714 300 0540

FAX : +1-714 300 0546

E-mail: jhan@foreseesonusa.com

### UK



#### Foreseeson UK Ltd

Hornbeam House, 81 Bridge Road,  
East Molesey, KT8 9HH, England

TEL: +44-208-546-1047

FAX: +44-208-391-4953

E-mail: jason.kwon@fsnmed.eu

### Europe



#### Foreseeson GmbH

Industriestrasse 38a  
63150 Heusenstamm, Germany

TEL: +49 (0) 6104-643980

FAX: +49 (0) 6104-64398-11

E-mail: jason.kwon@fsnmed.eu

---

[www.ophit.com](http://www.ophit.com)



---

REV. 1.1